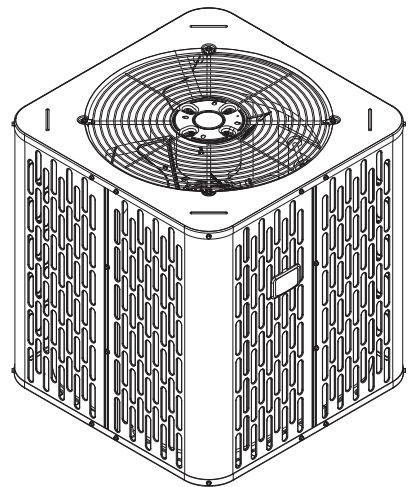


Product and Submittal Data

Split System Air Conditioner

A5AC3018A1000A
A5AC3024A1000A
A5AC3030A1000A
A5AC3036A1000A/B
A5AC3042A1000A/B/C
A5AC3048A1000A/B
A5AC3060A1000A



Note: Graphics in this document are for representation only.
Actual model may differ in appearance.

Copyright

This document and the information in it are the property of Trane, and may not be used or reproduced in whole or in part without written permission. Trane reserves the right to revise this publication at any time, and to make changes to its content without obligation to notify any person of such revision or change.

Trademark

All trademarks referenced in this document are the trademarks of their respective owners.

Data Notes

This document supersedes and includes data from the documents listed below.

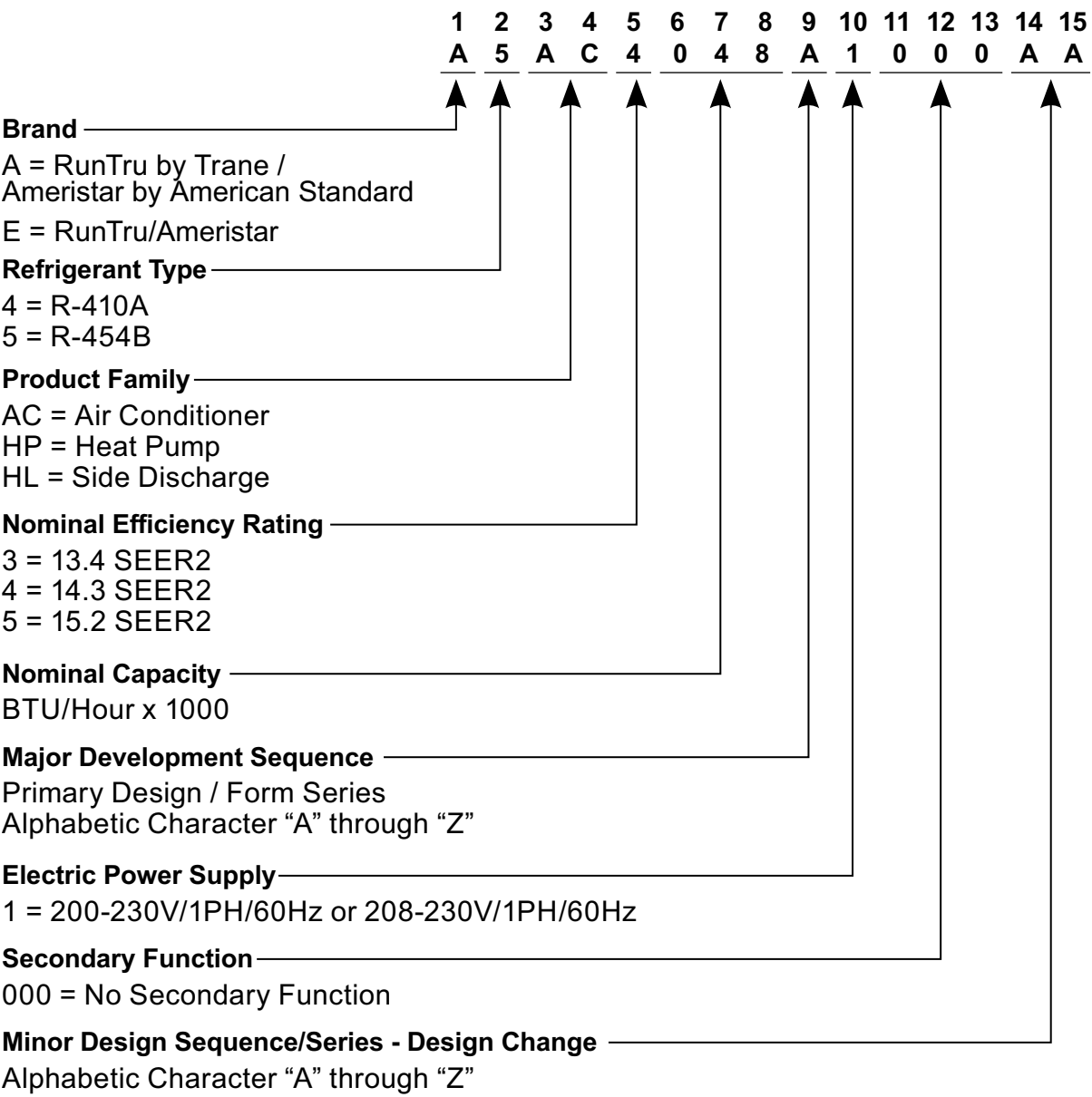
Table 1. Data notes

Literature Number	Title
AM-PRQ-A5AC3018A-1*	RunTru/Ameristar Submittal Split System Air Conditioner A5AC3018A1000A
RA32-PRQ001*-EN	RunTru/Ameristar Submittal Split System Cooling A5AC3024A1000A
AM-PRQ-A5AC3030A-1*	RunTru/Ameristar Submittal Split System Air Conditioner A5AC3030A1000A
AM-PRQ-A5AC3036A-1*	RunTru/Ameristar Submittal Split System Air Conditioner A5AC3032A1000A
RA35-PRQ001*-EN	RunTru/Ameristar Submittal Split System Air Conditioner A5AC3042A1000A
AM-PRQ-A5AC3048A-1*	RunTru/Ameristar Submittal Split System Air Conditioner A5AC3048A1000A
AM-PRQ-A5AC3060A-1*	RunTru/Ameristar Submittal Split System Air Conditioner A5AC3060A1000A

Table of Contents

- Model Number Description 4
- General Data 5
- Product Specifications 6
- Sound Power Level 9
- Wiring Diagrams 10
- Dimensional Data 14
- Mechanical Specification Options 15

Model Number Description



General Data

AHRI standard 210/240 rating conditions:

- Cooling: 80°F DB; air entering indoor coil: 67°F WB; air entering outdoor coil: 95°F DB
- High temperature heating: 47°F DB; air entering outdoor coil: 43°F WB; entering indoor coil: 70°F DB
- Low temperature heating: 17°F DB; air entering outdoor coil: 15°F WB; air entering indoor coil: 70°F DB
- Rated indoor airflow for heating is the same as for cooling.

AHRI standard 270 rating conditions:

The noise rating numbers are determined with the unit in cooling operation. Standard Noise Rating number is at 95°F outdoor air.

Product Specifications

Table 2. Models A5AC3018A1000A, A5AC3024A1000A, A5AC3030A1000A, and A5AC3036A1000A/B

Outdoor Unit ^(a) ^(b)	A5AC3018A1000A	A5AC3024A1000A	A5AC3030A1000A	A5AC3036A1000A/B
Power Conns. – V/Ph/Hz ^(c)	208/230/1/60	208/230/1/60	208/230/1/60	208/230/1/60
Min. BRCH. CIR. Ampacity	9	14	16	18
BR. CIR. PROT. RTG. – Max. (Amps)	20	20	25	30
Compressor	Scroll	Scroll	Scroll	Scroll
No. Used - No. Stages	1 - 1	1 - 1	1 - 1	1 - 1
Volts/Ph/Hz	208/230/1/60	208/230/1/60	208/230/1/60	208/230/1/60
R.L. Amps ^(d) - L.R. Amps	8.33 - 44.7	8.9 - 61	10.3 - 67.8	13.5 - 75.0/13.5 - 82.8
Factory Installed				
Start Components ^(e)	No (Uses BAYKSKT263)	No (Uses BAYKSKT263)	No	No
Insulation/Sound Blanket	No	No	No	No
Compressor Heat	No	No	No	No
Outdoor Fan	Propeller	Propeller	Propeller	Propeller
Dia. (in.) - No. Used	19 - 1	19 - 1	23.02 - 1	23.02 - 1
Type Drive - No. Speeds	Direct - 1	Direct - 1	Direct - 1	Direct - 1
CFM @ 0.0 (in.) W.G. ^(f)	2182	2450	2675	2675
No. Motors - HP	1 - 1/8	1 - 1/8	1 - 1/8	1 - 1/8
Motor Speed R.P.M.	825	1100	825	825
Volts/Ph/Hz	208/230/1/60	208/230/1/60	208/230/1/60	208/230/1/60
F.L. Amps	0.77	0.85	0.77	0.77
Outdoor Coil - Type	All Aluminum	All Aluminum	All Aluminum	All Aluminum
Rows - F.P.I.	1 - 24	1 - 24	1 - 24	1 - 24
Face Area (sq. ft.)	13.75	13.75	16.25	16.25
Tube Size (in.)	3/8	3/8	3/8	3/8
Refrigerant				
LBS. – R-454B (O.D. Unit) ^(g)	2 lbs., 15 oz	2 lbs., 12 oz	3 lbs., 2 oz	2 lbs., 15 oz
Factory Supplied	Yes	Yes	Yes	Yes
Valve Connection Size - (in.) O.D. Gas	3/4	3/4	3/4	3/4
Valve Connection Size - (in.) O.D. Liq.	5/16	5/16	5/16	5/16
Line Size – (in.) O.D. Gas ^(h) ⁽ⁱ⁾	3/4	3/4	3/4	3/4
Line Size - (in.) O.D. Liq.	5/16	5/16	5/16	5/16
Charging Specifications				
Subcooling	10°F	10°F	10°F	10°F
Dimensions	H × W × D	H × W × D	H × W × D	H × W × D
Crated (in.)	34.3 × 27 × 27	34.3 × 27 × 27	34.3 × 31.1 × 31.1	34.3 × 31.1 × 31.1
Weight				
Shipping (lbs.)	158	158	189	189
Net (lbs.)	134	134	161	161
Optional Accessories:				
Rubber Isolator Kit	BAYISLT101	BAYISLT101	BAYISLT101	BAYISLT101
Snow Leg — Base and Cap 4 in. High	BAYLEGS002	BAYLEGS002	BAYLEGS002	BAYLEGS002

Table 2. Models A5AC3018A1000A, A5AC3024A1000A, A5AC3030A1000A, and A5AC3036A1000A/B (continued)

Outdoor Unit ^(a) ^(b)	A5AC3018A1000A	A5AC3024A1000A	A5AC3030A1000A	A5AC3036A1000A/B
Snow Leg — 4 in. Extension	BAYLEGS003	BAYLEGS003	BAYLEGS003	BAYLEGS003
Extreme Condition Mounting Kit	BAYECMT023	BAYECMT023	BAYECMT023	BAYECMT023
Refrigerant Lineset ⁽ⁱ⁾	—			

^(a) Certified in accordance with the Air-Source Unitary Air-conditioner Equipment certification program, which is based on AHRI standard 210/240.

^(b) Rated in accordance with AHRI standard 270.

^(c) Calculated in accordance with Natl. Elec. Codes. Use only HACR circuit breakers or fuses.

^(d) This value shown for compressor RLA on the unit nameplate and on this specification sheet is used to compute minimum branch circuit ampacity and max. fuse size. The value shown is the branch circuit selection current.

^(e) Use start components only when compressor is found to enter locked rotor condition and will not start or when lights dim at compressor start." No means no start components. Yes means quick start kit components. PTC means positive temperature coefficient starter. Optional kit shown.

^(f) Standard Air - Dry Coil - Outdoor

^(g) This value approximate. For more precise value see unit nameplate.

^(h) Reference the outdoor unit ship-with literature for refrigerant piping length and lift guidelines. Reference the refrigerant piping software pub # 32-3312-xx or *Refrigerant Piping Manual for Small Split Cooling and Heat Pump Systems Application Guide* (SS-APG006*-EN) for long line sets or specialty applications (xx denotes latest revision).

⁽ⁱ⁾ The outdoor condensing units are factory charged with the system charge required for the outdoor condensing unit, ten (10) feet of tested connecting line, and the smallest rated indoor evaporative coil match. Always verify proper system charge via subcooling (TXV/EEV) or superheat (fixed orifice) per the unit nameplate.

^(j) 25, 30, 35 and 50 foot linesets available. For a complete listing of lineset options available from equipment or supply stores, refer to the Trane Residential and Light Commercial Product Handbook.

Table 3. Models A5AC3042A1000A/B/C, A5AC3048A1000A/B, and A5AC3060A1000A

Outdoor Unit ^(a) ^(b)	A5AC3042A1000A/B/C	A5AC3048A1000A/B	A5AC3060A1000A
Power Conns. – V/Ph/Hz ^(c)	208/230/1/60	208/230/1/60	208/230/1/60
Min. BRCH. CIR. Ampacity	22/22/23	23/26	30
BR. CIR. PROT. RTG. – Max. (Amps)	35/35/40	35/40	50
Compressor	Scroll	Scroll	Scroll
No. Used - No. Stages	1 - 1	1 - 1	1 - 1
Volts/Ph/Hz	208/230/1/60	208/230/1/60	208/230/1/60
R.L. Amps ^(d) - L.R. Amps	14.7 - 109/17.0 - 109/14.3 - 95	17.3 - 126/19.6 - 118	23.3 - 125/23.4 - 134
Factory Installed			
Start Components ^(e)	No	No (Uses BAYKSKT263)	No (Uses BAYKSKT263)
Insulation/Sound Blanket	No	No	No
Compressor Heat	No	No	No
Outdoor Fan	Propeller	Propeller	Propeller
Dia. (in.) - No. Used	23 - 1	27.5 - 1	27.5 - 1
Type Drive - No. Speeds	Direct - 1	Direct - 1	Direct - 1
CFM @ 0.0 (in.) W.G. ^(f)	3314	5221	5109
No. Motors - HP	1 - 1/8	1 - 1/5	1 - 1/5
Motor Speed R.P.M.	825	850	850
Volts/Ph/Hz	208/230/1/60	208/230/1/60	208/230/1/60
F.L. Amps	0.64	1.05	1.05
Outdoor Coil - Type	All Aluminum	All Aluminum	All Aluminum
Rows - F.P.I.	1 - 24	1 - 24	1 - 24
Face Area (sq. ft.)	21.25	24.93	24.93
Tube Size (in.)	3/8	3/8	3/8
Refrigerant			
LBS. – R-454B (O.D. Unit) ^(g)	4 lbs., 11 oz	4 lbs., 15 oz	5 lbs., 5 oz
Factory Supplied	Yes	Yes	Yes
Valve Connection Size - (in.) O.D. Gas	7/8	7/8	7/8

Product Specifications

Table 3. Models A5AC3042A1000A/B/C, A5AC3048A1000A/B, and A5AC3060A1000A (continued)

Outdoor Unit ^(a) ^(b)	A5AC3042A1000A/B/C	A5AC3048A1000A/B	A5AC3060A1000A
Valve Connection Size - (in.) O.D. Liq.	5/16	5/16	5/16
Line Size - (in.) O.D. Gas ^(h) ⁽ⁱ⁾	7/8	7/8	7/8
Line Size - (in.) O.D. Liq.	5/16	5/16	5/16
Charging Specifications			
Subcooling	10°F	10°F	10°F
Dimensions	H × W × D	H × W × D	H × W × D
Crated (in.)	42 × 31.1 × 31.1	42 × 35.6 × 35.6	42 × 35.6 × 35.6
Weight			
Shipping (lbs.)	230	246	251
Net (lbs.)	194	211	220
Optional Accessories:			
Rubber Isolator Kit	BAYISLT101	BAYISLT101	BAYISLT101
Snow Leg — Base and Cap 4 in. High	BAYLEGS002	BAYLEGS002	BAYLEGS002
Snow Leg — 4 in. Extension	BAYLEGS003	BAYLEGS003	BAYLEGS003
Extreme Condition Mounting Kit	BAYECMT023	BAYECMT023	BAYECMT023
Refrigerant Lineset ⁽ⁱ⁾	—		

^(a) Certified in accordance with the Air-Source Unitary Air-conditioner Equipment certification program, which is based on AHRI standard 210/240.

^(b) Rated in accordance with AHRI standard 270.

^(c) Calculated in accordance with Natl. Elec. Codes. Use only HACR circuit breakers or fuses.

^(d) This value shown for compressor RLA on the unit nameplate and on this specification sheet is used to compute minimum branch circuit ampacity and max. fuse size. The value shown is the branch circuit selection current.

^(e) Use start components only when compressor is found to enter locked rotor condition and will not start or when lights dim at compressor start." No means no start components. Yes means quick start kit components. PTC means positive temperature coefficient starter. Optional kit shown.

^(f) Standard Air - Dry Coil - Outdoor

^(g) This value approximate. For more precise value see unit nameplate.

^(h) Reference the outdoor unit ship-with literature for refrigerant piping length and lift guidelines. Reference the refrigerant piping software pub # 32-3312-xx or *Refrigerant Piping Manual for Small Split Cooling and Heat Pump Systems Application Guide* (SS-APG006*-EN) for long line sets or specialty applications (xx denotes latest revision).

⁽ⁱ⁾ The outdoor condensing units are factory charged with the system charge required for the outdoor condensing unit, ten (10) feet of tested connecting line, and the smallest rated indoor evaporative coil match. Always verify proper system charge via subcooling (TXV/EEV) or superheat (fixed orifice) per the unit nameplate.

^(j) 25, 30, 35 and 50 foot linesets available. For a complete listing of lineset options available from equipment or supply stores, refer to the Trane Residential and Light Commercial Product Handbook.

Sound Power Level

Table 4. Models — A5AC3018A, A5AC3024A, A5AC3030A, A5AC3036A, A5AC3042A, A5AC3048A, and A5AC3060A

Model	A-Weighted Sound Power Level [dB (A)]	Full Octave Sound Power(dB)							
		63 Hz ^(a)	125 Hz	250 Hz	500 Hz	1000 Hz	2000 Hz	4000 Hz	8000 Hz
A5AC3018A	71	74	71	65	68	67	63	56	50
A5AC3024A	71	74	71	65	68	67	63	56	50
A5AC3030A	73	79	69	67	70	70	64	59	53
A5AC3036A	73	79	69	67	70	70	64	59	53
A5AC3042A	73	79	69	67	70	70	64	59	53
A5AC3048A	71	81	72	69	69	66	60	57	54
A5AC3060A	71	81	72	69	69	66	60	57	54

Note: Rated in accordance with AHRI Standard 270–2008.

^(a) For reference only.

Wiring Diagrams

Figure 1. Wiring diagram – 018, 024, 030, 036, 042, and 048 models

TO POWER SUPPLY PER UNIT NAMEPLATE AND LOCAL CODES

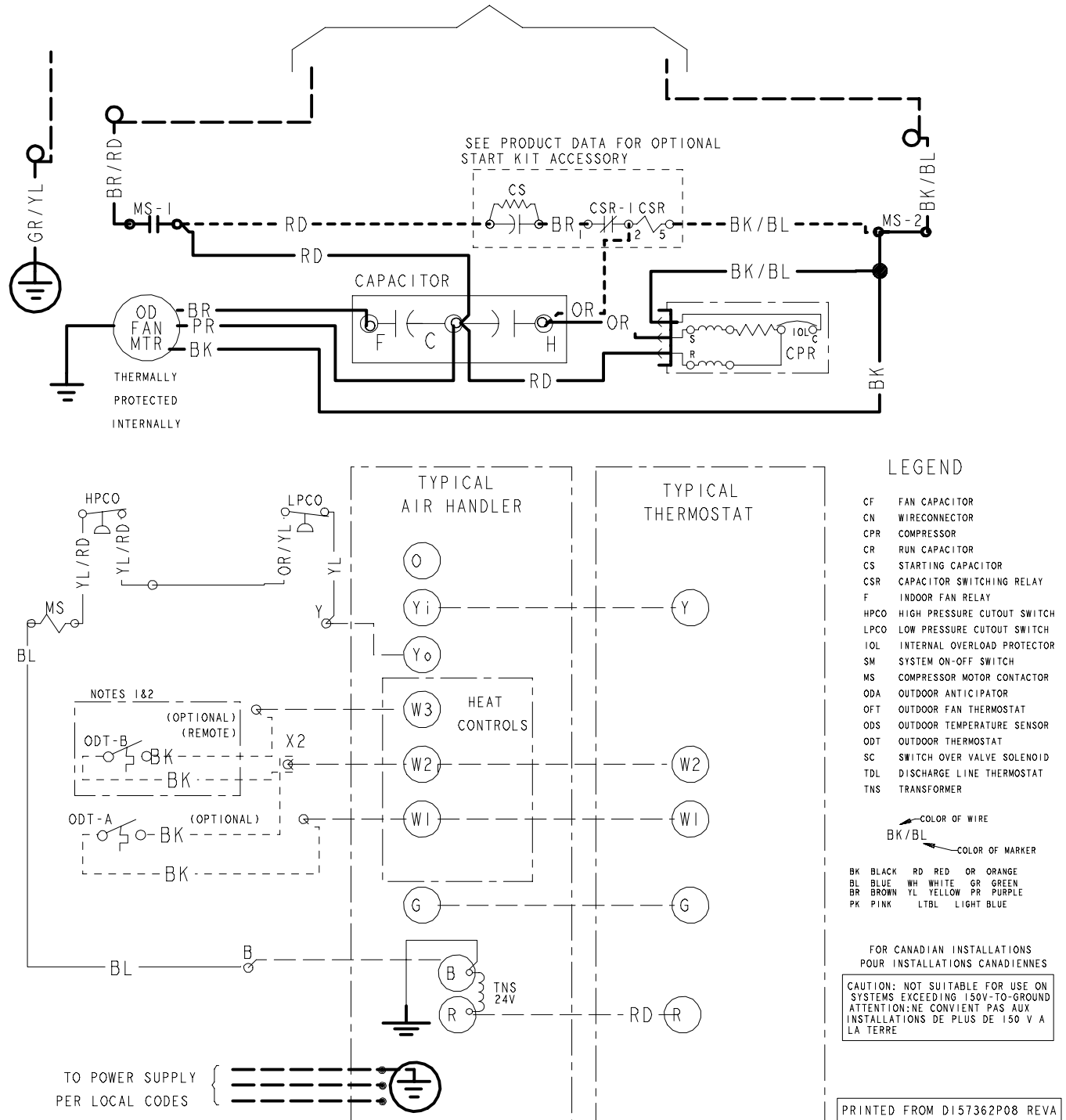


Figure 2. Wiring diagram – 018, 024, 030, 036, 042, and 048 models

NOTES:

1. IF ODT-B IS NOT USED. ADD JUMPER BETWEEN W2 & W3 AT AIR HANDLER. IF USED, ODT-B MUST BE MOUNTED REMOTE OF CONTROL BOX IN AN APPROVED WEATHER PROOF ENCLOSURE.
2. IF ODT-A IS NOT USED. ADD JUMPER BETWEEN W1 & W2 AT AIR HANDLER.
3. LOW VOLTAGE (24 V) FIELD WIRING MUST BE 18 AWG MIN.

LEGEND

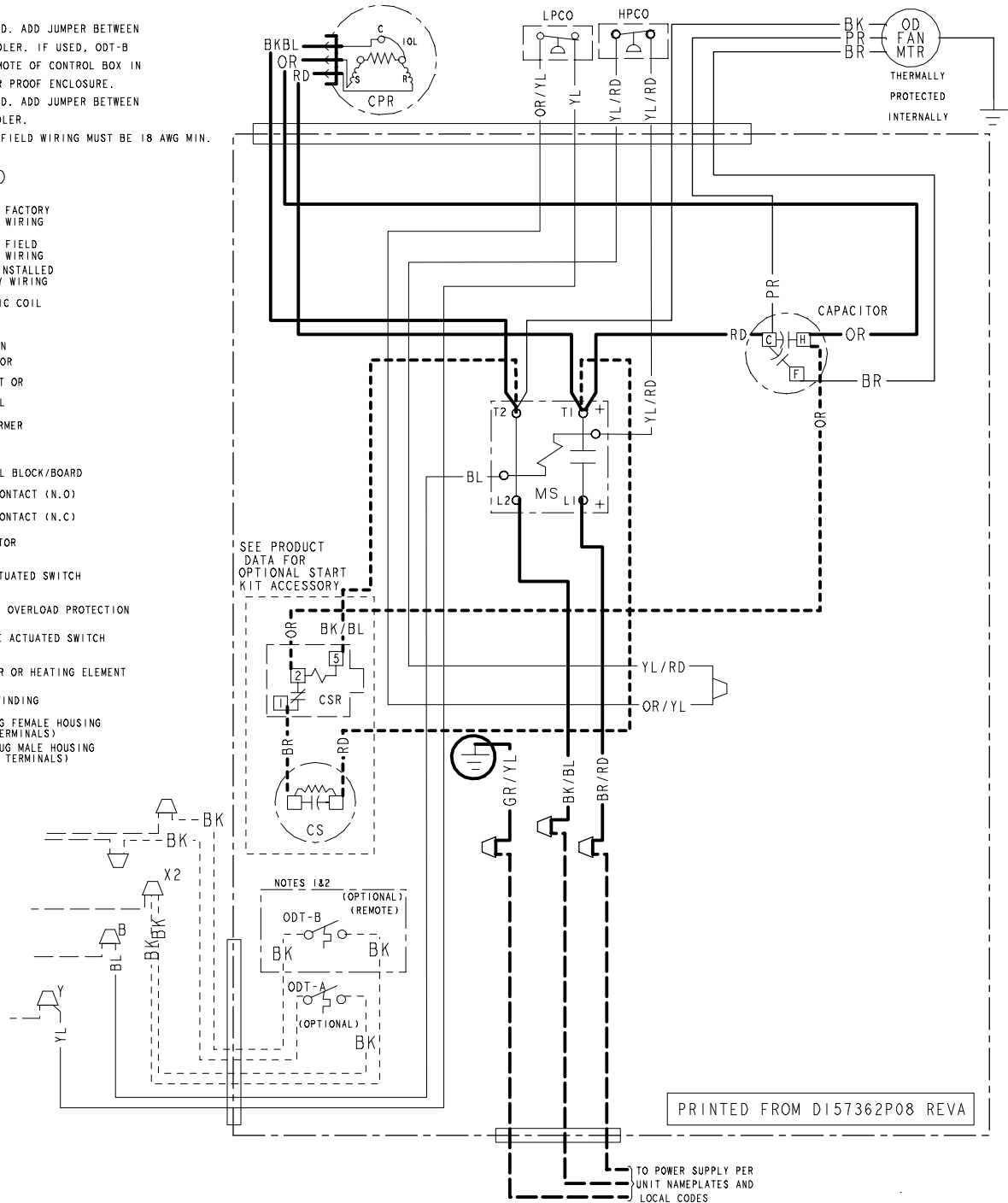
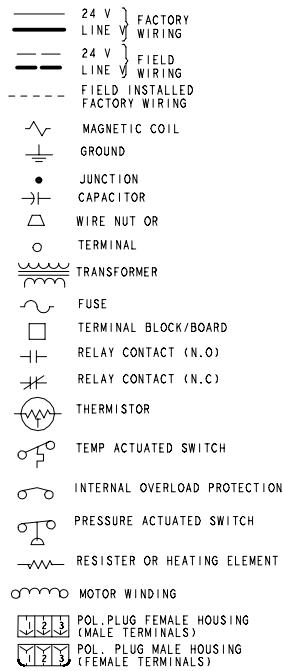


Figure 3. Wiring diagram – 060 model

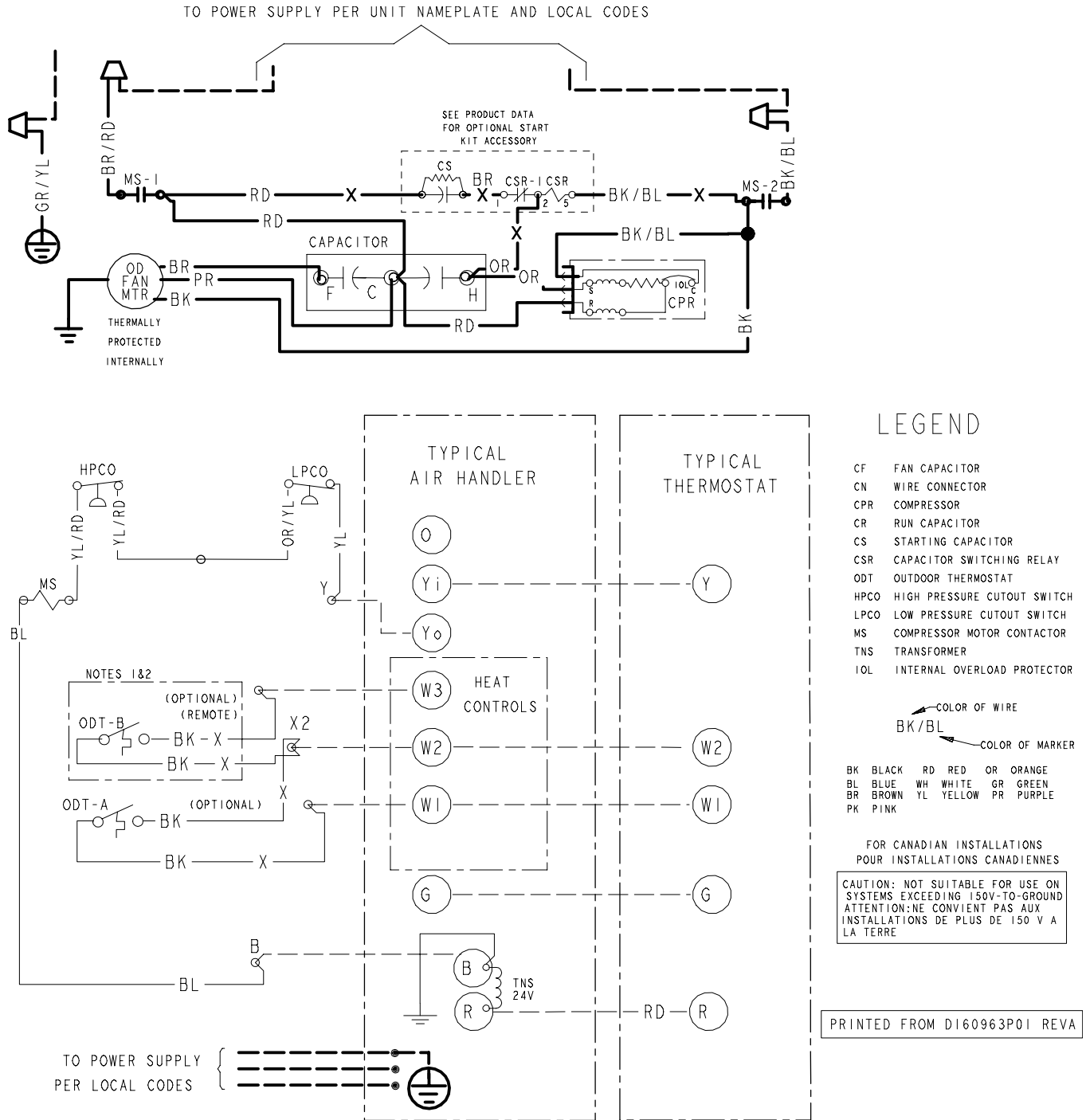


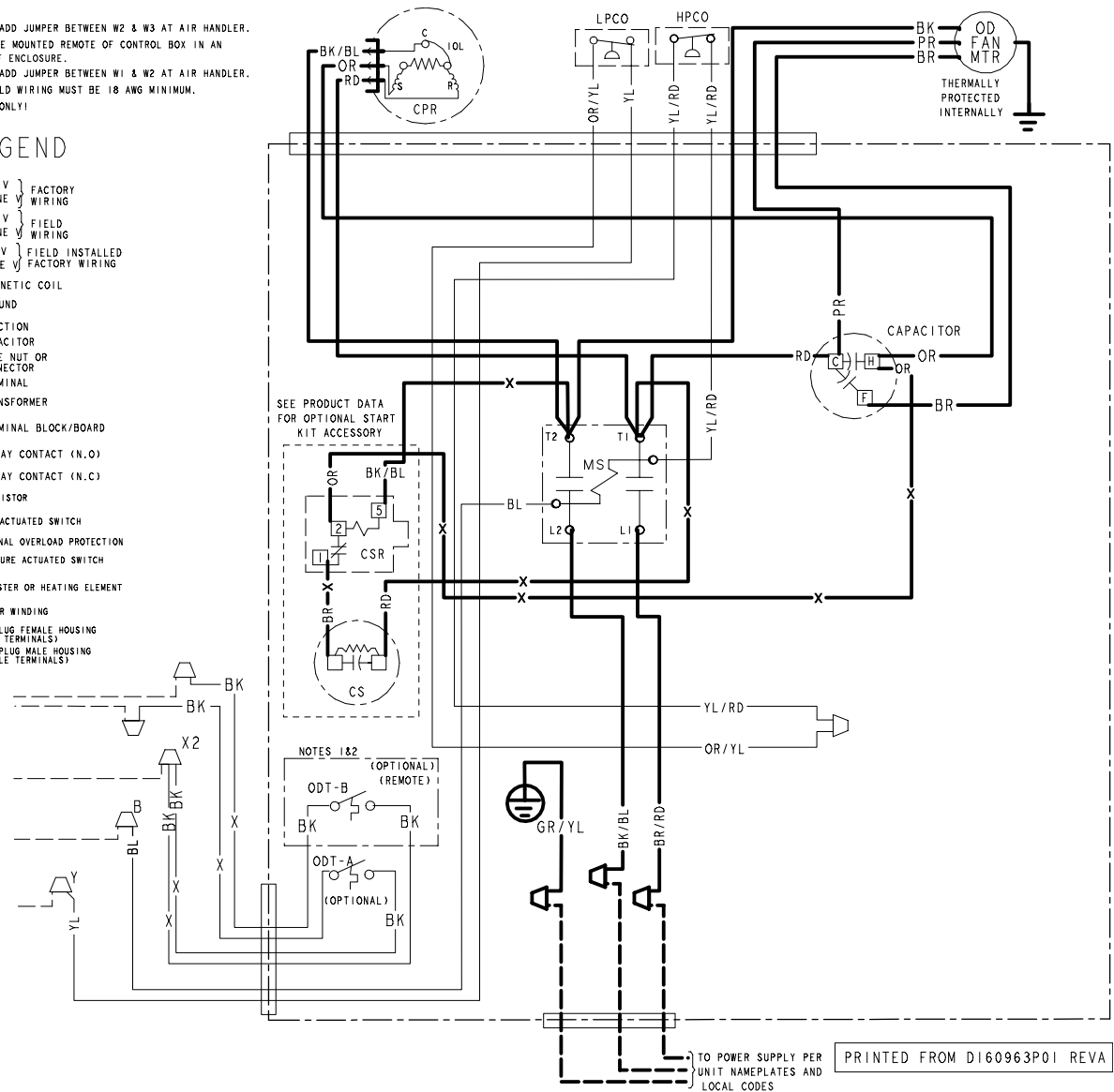
Figure 4. Wiring diagram – 060 model

NOTES:

1. IF ODT-B IS NOT USED, ADD JUMPER BETWEEN W2 & W3 AT AIR HANDLER.
IF USED, ODT-B MUST BE MOUNTED REMOTE OF CONTROL BOX IN AN APPROVED WEATHER PROOF ENCLOSURE.
2. IF ODT-A IS NOT USED, ADD JUMPER BETWEEN W1 & W2 AT AIR HANDLER.
3. LOW VOLTAGE (24 V) FIELD WIRING MUST BE 18 AWG MINIMUM.
4. USE COPPER CONDUCTORS ONLY!

LEGEND

- 24 V } FACTORY WIRING
- 24 V } FIELD WIRING
- X— 24 V } FIELD INSTALLED
- X— LINE } FACTORY WIRING
- MAGNETIC COIL
- GROUND
- JUNCTION
- CAPACITOR
- WIRE NUT OR CONNECTOR
- TERMINAL
- TRANSFORMER
- TERMINAL BLOCK/BOARD
- RELAY CONTACT (N.O.)
- RELAY CONTACT (N.C.)
- THERMISTOR
- TEMP ACTUATED SWITCH
- INTERNAL OVERLOAD PROTECTION
- PRESSURE ACTUATED SWITCH
- RESISTOR OR HEATING ELEMENT
- MOTOR WINDING
- POL. PLUG FEMALE HOUSING (MALE TERMINALS)
- POL. PLUG MALE HOUSING (FEMALE TERMINALS)



Dimensional Data

Figure 5. Dimensional drawing

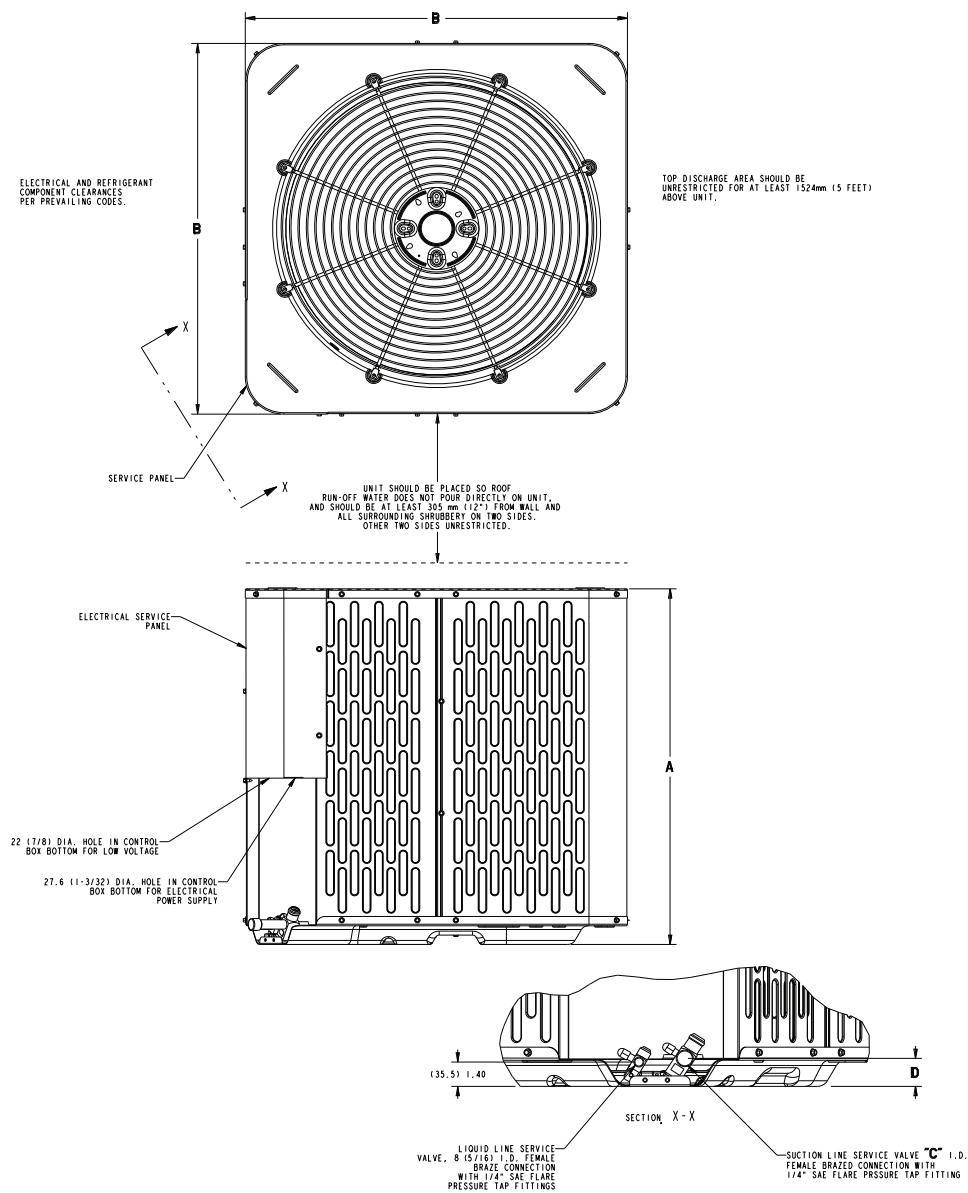


Table 5. Dimensions (mm (in.))

Model	Base	A	B	C	D
A5AC3018A	2.2	727 (28-5/8)	651 (25-5/8)	19 (3/4)	41 (1-5/8)
A5AC3024A	2.2	727 (28-5/8)	651 (25-5/8)	19 (3/4)	41 (1-5/8)
A5AC3030A	3.2	727 (28-5/8)	756 (29-3/4)	19 (3/4)	41 (1-5/8)
A5AC3036A	3.2	727 (28-5/8)	756 (29-3/4)	19 (3/4)	41 (1-5/8)
A5AC3042A	3.4	930 (36-5/8)	756 (29-3/4)	19 (3/4)	41 (1-5/8)
A5AC3048A	4.4	930 (36-5/8)	870 (34-1/4)	22 (7/8)	43 (1-3/4)
A5AC3060A	4.4	930 (36-5/8)	870 (34-1/4)	22 (7/8)	43 (1-3/4)

Mechanical Specification Options

General

The outdoor condensing units are factory charged with the system charge required for the outdoor condensing unit, ten (10) feet of tested connecting line, and the smallest rated indoor evaporative coil match. This unit is designed to operate at outdoor ambient temperatures as high as 115°F. Cooling capacities are matched with a wide selection of air handlers and furnace coils that are AHRI certified. The unit is certified to UL 60335-2-40. Exterior is designed for outdoor application.

Casing

Unit casing is constructed of heavy gauge, galvanized steel and painted with a weather-resistant powder paint finish. The corner panels are prepainted. All panels are subjected to our 1,000 hour salt spray test.

Refrigerant Controls

Refrigeration system controls include condenser fan, compressor contactor and low and high pressure switches.

Compressor

The compressor features internal over temperature and pressure protection. Other features include: Centrifugal oil pump and low vibration and noise.

Condenser Coil

The outdoor coil provides low airflow resistance and efficient heat transfer. The coil is protected on all four sides by louvered panels.

Low Ambient Cooling

As manufactured, this system has a cooling capacity to 55°F. The addition of an evaporator defrost control permits operation to 40°F. The addition of an evaporator defrost control with TXV permits low ambient cooling to 30°F.

The addition of the BAYLOAM108 low ambient kit permits ambient cooling to 20°F.

Thermostats

Cooling only and heat/cooling (manual and automatic change over). Sub-base to match thermostat and locking thermostat cover.

About Trane and American Standard Heating and Air Conditioning

Trane and American Standard create comfortable, energy efficient indoor environments for residential applications. For more information, please visit www.trane.com or www.americanstandardair.com.



The AHRI Certified mark indicates company participation in the AHRI Certification program. For verification of individual certified products, go to ahridirectory.org.

The manufacturer has a policy of continuous data improvement and it reserves the right to change design and specifications without notice. We are committed to using environmentally conscious print practices.